

Simply

SEPTEMBER 2018

Liverpool

THE COACH AND GROUP ORGANISER'S
GUIDE TO LIVERPOOL

HOW TO SPEND 48HRS IN THE CITY

We experience Liverpool and visit
some new sites for 2018

AROUND THE CORNER IN 2019

Time to get planning: There's plenty
in store for next year

LIVERPOOL'S HIDDEN GEMS

Music, safaris and more - there
is much to be discovered

Brought to you by

BRITISH
**tourism
& travel**
SHOW 2019
20-21 MARCH | NEC BIRMINGHAM

In partnership with

**VISIT
LIVERPOOL**

BIRDS OF PREY AND SEA LION DISPLAYS

OVER 40 SPECIES OF ANIMALS

THE UK'S LONGEST SAFARI DRIVE

LIVERPOOL CITY REGION TOURISM AWARDS 2017

WINNER OF LARGE VISITOR ATTRACTION OF THE YEAR

NEW

TIGER TRAIL

NOW OPEN

BOOK TICKETS AT KNOWSLEYSAFARI.CO.UK

KNOWSLEY SAFARI

ADVENTURE CALLS

10 YEARS ECHO arena

WHAT'S ON

Stihl TIMBERSPORTS® World Championship
19 - 20 October

André Rieu Tour 2018
14 December

Peter Pan
14 - 24 December

Liverpool International Horse Show
28 - 31 December

ECHOARENA.COM

@ECHOARENA

LIVERPOOL'S MUST SEE EXPERIENCES

- See the UNESCO World Heritage Waterfront with **Mersey Ferries**
- Learn about the city's culture & history on the **City Explorer Bus**
- Take in views from the top of the **Liverpool Cathedral**

Group packages & discounts available:

DO THE DOUBLE

DO THE TREBLE

To arrange your group visit call **0151 330 1420** or email groups@merseyferries.co.uk Or visit www.merseyferries.co.uk/groups

City Explorer **MERSEY FERRIES** **LIVERPOOL CATHEDRAL**

Simply Liverpool

FOR EDITORIAL:

Editor

Michaela Peacock
01733 889682
mpeacock@divcom.co.uk

Journalist

Jessica Barton
01733 889334
jbarton@divcom.co.uk

FOR ADVERTISING:

Senior Sales Executive

Sally Eyre
01733 889687
seyre@divcom.co.uk

PUBLISHING TEAM:

Office Manager

Tracey Harrison

Admin Executive

Martha King
adcoppy@divcom.co.uk

Graphic Design

Callum Thorndyke
Phil Robinson
Ross Phillips

Published by

diversified
COMMUNICATIONS UK

Diversified Communications UK Ltd
Unit 4, Minerva Business Park
Lynch Wood, Peterborough PE2 6FT
01733 405730 | www.divcom.co.uk

Please note calls may be recorded.

All advertising is undertaken in accordance with the terms and conditions on our website.

A spectacular year for Liverpool

Welcome to this year's edition of **Simply Liverpool**, which is released as we progress through a major year for our city region.

It is hard to believe that a whole year has passed since we introduced the very first Simply Liverpool supplement, as we prepared for 2018 and the 10th anniversary since we were crowned European Capital of Culture.

As we hoped, 2018 has been a spectacular year for us with a record number of visitors choosing Liverpool and the city was recently named third best destination in the UK in the TripAdvisor Travellers Choice Awards, sitting only behind capital cities London and Edinburgh.

The city has played host to various major events this year including the end of the Clipper Round the World Yacht Race and of course, the Terracotta Warriors.

The exhibition showcases objects from one of the world's greatest archaeological discoveries, namely the terracotta warriors who guarded the tomb of China's first Emperor. The magnificent exhibition has been hugely popular; breaking records to be the World Museum's most popular exhibition ever. It also proved to be the perfect stop for groups.

This year has also seen the return of Liverpool Biennial, a contemporary art festival that takes over the city every two years.

Liverpool's mix of culture, music, sport and history continues to grow and a new attraction which is not to be missed is the Magical History Museum. Exploring the careers of The Beatles it tells their story through around 300 original items including John Lennon's Sergeant Pepper medals and George Harrison's guitar. This latest addition to the city's extensive Beatles offering

further solidifies Liverpool's status as a UNESCO City of Music.

Liverpool International Horse Show is set to return to the Echo Arena at the end of the year for what is sure to be yet another successful event.

There is still plenty to come as we progress through the year and we are looking forward to 2019, which is set to be yet another successful year for Liverpool City Region.

The iconic Strawberry Fields will re-open its gates to the public when it is developed into an exhibition and training space. Meanwhile work will begin on the brand-new cruise terminal on Liverpool's waterfront.

The city is also looking forward to welcoming two major exhibitions in 2019. The Walker Art Gallery will host works from both Charles Rennie Mackintosh and Leonardo da Vinci, both of which are set to be incredibly popular with visitors. More events can be found on page 14.

This is just a small insight into what's happening in Liverpool, to get a real taste of everything the city region has to offer visit the website or get in touch with us to start planning your visit.

visitliverpool.com

James Wood
Marketing Campaign Manager
Marketing Liverpool




EXPERIENCE

LAND ROVER EXPERIENCE

LIVERPOOL

LAND ROVER

ABOVE & BEYOND



AN EXCLUSIVE LOOK BEHIND-THE-SCENES AT OUR ICONIC MANUFACTURING SITE

Tours start from £29 per person*

Our expert tour guides show what it takes to bring a Land Rover vehicle to life. Guests can view the complete production process from start to finish, and witness our captivating family of robots who work seamlessly with our skilled team to create vehicles to customers' exact specifications.

Facilities include coach parking, meet and greet services, disabled toilet facilities and a driver incentive scheme.

For more information contact + 44 (0) 1514 484023
email: liverpool@landroverexperience.com
or visit: landrover.com/experienceliverpool

CHARLES RENNIE MACKINTOSH




Image: Margaret Macdonald Mackintosh, *The May Queen*, 1900. © CSG CIC Glasgow Museums Collection.

An exhibition spanning the lifetime of Charles Rennie Mackintosh (1868-1928) and his contemporaries, exploring the movement that became known as The Glasgow Style. Glasgow was the birthplace of the only Art Nouveau 'movement' in the UK and its significance was recognised internationally.

This exhibition will present more than 250 objects drawn from Glasgow Museums and the Mitchell Library and Archives, as well as loans from private and public collections.

Walker

Art Gallery

15 March to 26 August 2019


For ticketing information, and to register your interest for group travel, visit liverpoolmuseums.org.uk/mackintosh

Pullman Liverpool

Your upscale waterfront hotel in the heart of the city

Kings Dock, Liverpool L3 4FP

pullmanliverpool.com — T: 0151 945 1000 — E: h9227-re@accor.com



pullman

HOTELS AND RESORTS

OUR WORLD IS YOUR PLAYGROUND

AN ACCOR HOTELS BRAND

PULLMANHOTELS.COM

THE CAVERN CLUB

LIVERPOOL

Presents




THE CAVERN CLUB

THE MAGICAL MYSTERY TOUR




THE CAVERN PUB

INTERNATIONAL BEATLEWEEK FESTIVAL

DISCOVER BEATLES LIVERPOOL

f

t

i

@cavernliverpool

www.cavernclub.com

A fab time in Liverpool awaits

As well as famous must-see sites, **Liverpool has welcomed some new attractions for 2018.** Where to start?




National Museums Liverpool

Tate Liverpool

Liverpool FC Stadium

City Explorer



 **Michaela Peacock**
mpeacock@divcom.co.uk

What's the first thing to come to mind when you think of Liverpool?

For most it will be The Beatles, football or maybe Cilla Black. But Liverpool offers much more for visitors.

The city has more museums and galleries than any other city in the UK outside of London, and with most of them being free-to-enter, there's no reason not to visit.

Liverpool also holds two UNESCO

accreditations – its historic waterfront is a UNESCO world heritage site, as well as it being a UNESCO City of Music - which shines throughout the city with many sites and attractions dedicated to The Fab Four.

As well as the many attractions and experiences in the city, Liverpool is a great place to be based as part of a tour of the north west, with Wales, Cumbria and Chester all within a 90-minute drive. With the seaside towns of Southport and New Brighton on the doorstep too, it makes the perfect destination for visits. It has been 10 years since the north-west city scooped the title European Capital of Culture 2008, and

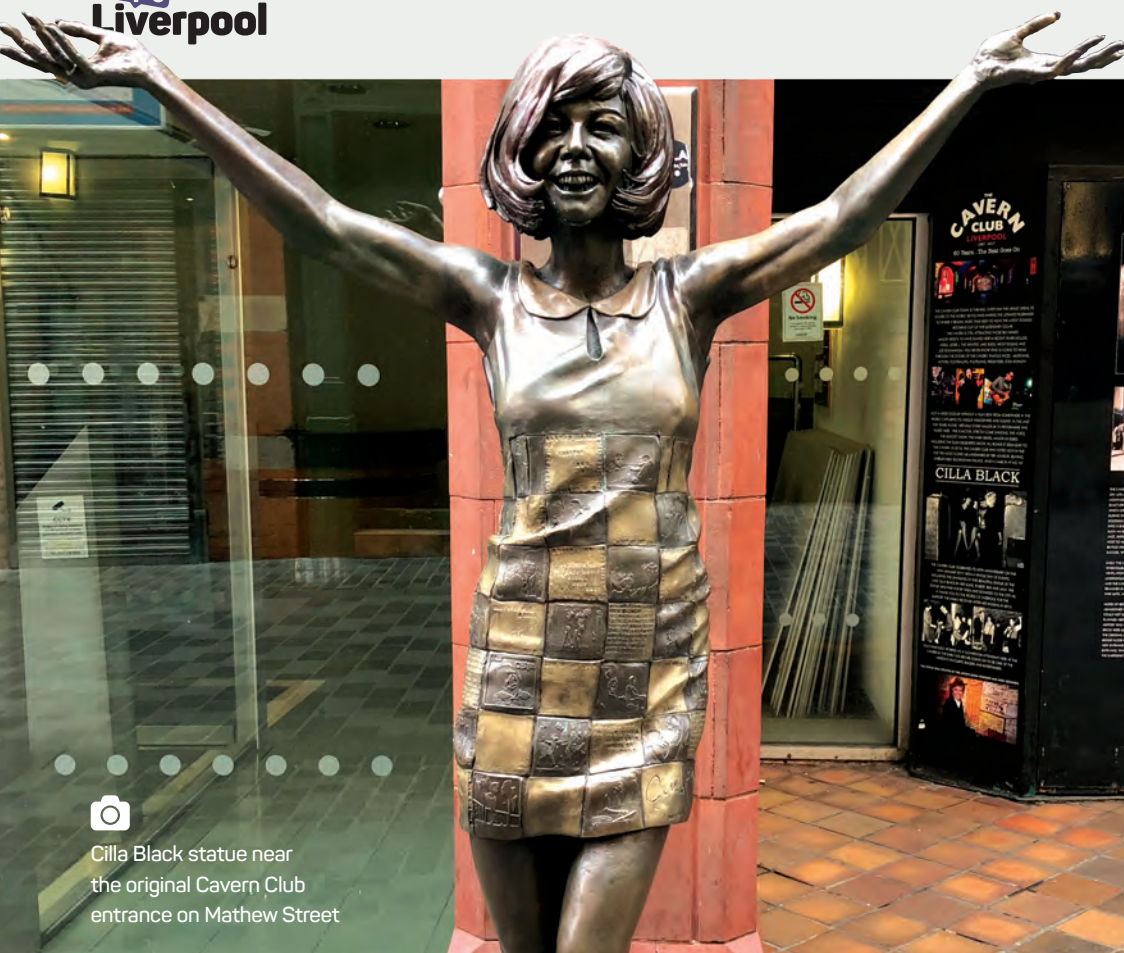
Best for...

SIGHTS

EXPLORING

ART





📷
Cilla Black statue near
the original Cavern Club
entrance on Mathew Street

we pay a visit to see what's in store for groups now.

THE WORLD AWAITS

The World Museum is currently showcasing objects from "one of the world's greatest archaeological discoveries" and it spans almost 1,000 years of Chinese history.

We were lucky enough to go and see this exhibition that shows the Terracotta Warriors – the first time they have been on display in UK since 2008.

The life-sized warriors are described as being a chance discovery in 1974.

They were found secretly guarding the tomb of China's First Emperor, Qin Shi Huang, for over 2,000 years and are a must-see for any visitors to the city.

As well as the Terracotta Warriors, the museum also shows objects that have never been on show in the UK.

The museum has made this exhibition a truly breath-taking experience. First visitors are shown a video that highlights China's history and life, the group then proceeds to the display seeing various objects along with the story of China's Empire.

The display doesn't end with the Warriors. The museum has also created an illusion to give visitors a glimpse into Qin Shi Huang's

Mausoleum. It states: "On exiting the exhibition we would like to share with you a moment of wonder and magic as you experience our interpretation of the First Emperor's mausoleum." Tickets are required, for group bookings of 10 or more visit: liverpoolmuseums.org.uk/wml/exhibitions/terracotta-warriors/group-bookings

The Terracotta Warriors exhibition is set to end on 28 October, but don't worry if you can't make it to see the Warriors, Liverpool's World Museum is home to many collections, including:

■ **Ancient Egypt**
This is one of the largest Ancient Egypt collections in Britain with over 16,000 objects. Expect to find: Human remains; architecture; containers and more.

■ **Ancient Greece**
You can see objects from the third millennium BC to the second century BC here. Expect to find: Religious figures; jars; armour and more.

■ **Geology**
Have you ever seen anything that's 4.5 million years old? The World Museum has 67,000



📷
One of the Warriors
on display

GROUP PLANNING

There's so much to see and do in and around Liverpool. Whether that be a river cruise, wandering the museums or simply exploring the city, VisitLiverpool will be able to help you plan the perfect experience.



visitliverpool.com/traveltrade

MAKING IT HAPPEN... USEFUL CONTACTS

LIVERPOOL BIENNIAL
biennial.com
📞 0151 709 7444

MUSEUM OF LIVERPOOL
liverpoolmuseums.org.uk/mol
📞 0151 478 4545

WORLD MUSEUM
liverpoolmuseums.org.uk/wml
📞 0151 478 4393

CITY EXPLORER LIVERPOOL
cityexplorerliverpool.co.uk
📞 0151 933 2324

LIVERPOOL FC STADIUM TOUR
stadiumtours.liverpoolfc.com
📞 0151 906 1817

MAGICAL HISTORY MUSEUM
magicalhistorymuseum.com
📞 0151 236 8333

rocks, minerals and fossils in its collection for you to behold.

The museum also has a free-to-enter aquarium which features tropical, mangrove, and native sea creatures.

Visit liverpoolmuseums.org.uk/wml/visit/floor-plans/aquarium for more information.

DOUBLE FANTASY

The World Museum, together with the Museum of Liverpool, Walker Art Gallery, International Slavery Museum, Merseyside Maritime Museum, Lady Lever Art Gallery, Sudley House and Border Agency National Museum, make up the National Museums Liverpool – all of which are open seven days a week with free admission.

And the Museum of Liverpool was our second point of call.

Groups will have no trouble finding the distinctive building; it sits on the city's famous waterfront, in between the Three Graces and the Albert Dock.

The £72m museum, opened in 2011, is the largest newly-built national museum in Britain for more than a century – and is the world's first national museum devoted to the history of a regional city, which is why it's the perfect location for its newest exhibition.

The Beatles are undoubtedly the first thing that comes to mind when you think of Liverpool, and you won't be short of sites to see in the city linked to the world-famous band.

But something different, unique, and quite awe-inspiring is the *Double Fantasy* – John & Yoko exhibition at the Museum of Liverpool.

An exhibition like no other, Double Fantasy

– named after the 1980 album released by the duo – has been made possible by Yoko Ono Lennon.

It's a personal collection, laid out in chronological order showing visitors an inside look of this creative couple's life in their own words.

Displaying belongings owned by John and Yoko, song lyrics, quotes and photography, the exhibition "explores the personal and creative chemistry of this iconic couple and their on-going Imagine Peace campaign."

Visitors move round the room on a journey from the couple's beginnings to John's tragic and untimely death, seeing intimate and personal items along the way, including John Lennon's iconic glasses, their wedding certificate and outfits, and even a replica of the John Lennon memorial in Central Park, New York.

The items on display stand out against the monochromatic backdrops and create a truly surreal experience.

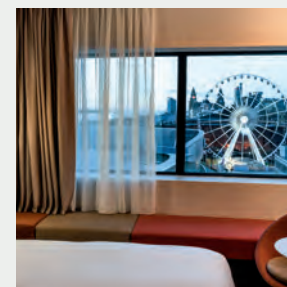
This breathtaking world-first is free to enter and is a major part of Liverpool's celebration of its 10th anniversary as European Capital of Culture. Visit: liverpoolmuseums.org.uk/learning/adult-group-bookings-form

BEAUTIFUL BIENNIAL

Just a short walk from the Museum of Liverpool is Tate Liverpool, a museum that gives visitors the opportunity to see some of the best British and international modern art in the north of England.

In a prime location on the Royal Albert Dock – a standalone site in its own right – the Tate has

PLACES TO STAY THAT ARE GREAT FOR GROUPS...



PULLMAN HOTEL

- 216 rooms
- 0151 945 1000

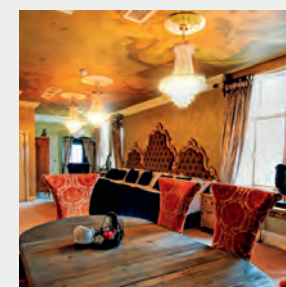
Located at Kings Dock on Liverpool's world-famous waterfront and just a short walk from the vibrant Albert Dock, this four-star hotel is in a great location. All rooms have free wi-fi, Sky and BT Sports.



HOTEL INDIGO

- 151 rooms
- 0151 559 0111

A chic hotel in the city centre, bursting with character. Onsite is Marco Pierre White's Steakhouse Bar & Grill and most of Liverpool's most famous attractions are a five-minute walk away.



30 JAMES STREET

- 64 rooms
- 0151 909 4644

Formerly White Star Line headquarters, 30 James Street, 'Home of the Titanic' – this hotel offers a truly unique stay. The rooms are styled like a cruise ships ranging from 'cabins' to suites on the Titanic floor.

GETTING THERE



BY COACH

MEDIUM-STAY PARKING

A total of 39 parking bays have been allocated around the city centre. These parking bays are free to use and no advance booking is required. All parking bays are in operation 0800-1800hrs.

Bankfield Street, L20: eight bays

Regent Road, L3 (between Carlton Street and Dublin Street): four bays

Regent Road, L5 (between Fulton Street and Boundary Street): 12 bays

Regent Road, L5 (between Walter Street and Fulton Street): three bays

Sandhills Lane, L20: three bays

Upper Duke Street, L1 (adjacent to Liverpool Cathedral): three bays

Bath Street, L3: six bays

OFF-STREET PARKING

Riverside Drive, L3: 18 bays, no pre-booking necessary

DROP-OFF AND PICK-UP

Gower Street, Albert Dock, L3 4AD

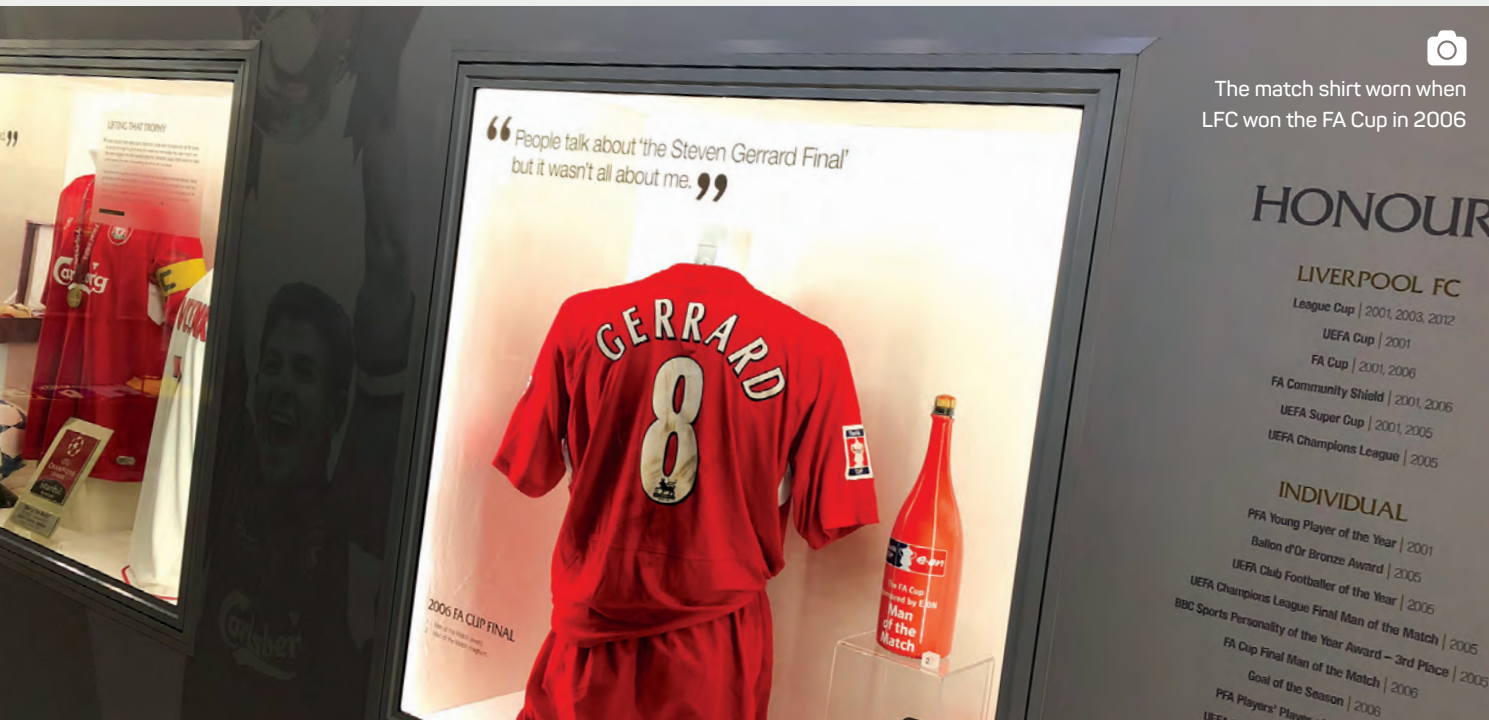
Crosshall Street, L1 6DQ

William Brown Street, L3 8EN

Liverpool Cathedral, L1 7AZ

Salthouse Quay, Albert Dock, L3 4AD

Liverpool One Bus Station, L1 8DA



a large display of art and special exhibitions, and with four floors to explore, there's plenty to see.

The museum is free to enter and in celebration of Liverpool Biennial 2018, *Beautiful world, where are you?* the Tate is host to some of the art.

Every two years, the city is the stage for Liverpool Biennial – the UK's contemporary arts festival. Spanning over 15 weeks across the city featuring 40 artists from 22 countries around the world to make and present work in the context of Liverpool.

When at the Tate, we viewed the immersive creation from Haegue Yang.

Says Liverpool Biennial: "Yang has created an immersive environment for her sculpture series *The Intermediates* (2015-ongoing) in Tate Liverpool's Wolfson Gallery [located on the ground floor].

"Made from artificial woven straw, *The Intermediates* allude to both traditional arts and crafts techniques and modern industrial production methods.

"Representing figures and sites from folk tales and ancient traditions, they question definitions of 'paganism'. Yang's environment for these works includes recordings of wildlife taken from the British Library's sound collection, a wallpaper juxtaposing pagan traditions and modern history, and suspended ribbons that evoke folk traditions such as maypole dancing. Her multisensory, hybrid environments suggest fleeting connotations of time, place, figures and experiences that connect 'folk' traditions and contemporary culture."

It's an incredible and tranquil experience to be

in a museum – a usually quiet place – and hear the sounds of birds and other wildlife.

You can find more pieces of art supporting the Biennial across Liverpool at:

- Liverpool John Moores University Exhibition Research Lab
- Liverpool Metropolitan Cathedral
- St George's Hall
- Tate Liverpool
- Victoria Gallery & Museum (University of Liverpool).

More information and other hosts to Liverpool Biennial can be found at:

biennial.com/2018/exhibition/about

YOU'LL NEVER WALK ALONE

Our second day in Liverpool saw us venture out of the city centre to Anfield Stadium, home of Liverpool Football Club.

This group-friendly attraction offers much for groups to see and do.

They can visit the Liverpool FC Story museum showcasing the history of the club from its inception 126 years ago, until where it is today. Highlighting every aspect of its history.

The museum features a new Steven Gerrard Collection, which was a personal collection donated from the captain himself.

It includes Gerrard's England shirts, medals, trophies, Liverpool shirts, shirts swapped with opposing teams and much more.

As groups wander round taking in each personal memory to the great player, you can hear him (or watch him) telling the story of

how it came into his collection on the screens provided. The museum also pays a touching tribute to the 96 people who lost their lives at Hillsborough.

The museum is designed like a timeline, when you approach the year 1989 – the year of the disaster – 96 football scarves hang above, and in the background you can hear the famous anthem 'You'll Never Walk Alone'.

The museum also features football boots, shirts and a collection of five European cups.

Then we moved on to the stadium tour, where visitors go behind the scenes inside one of the world's most historic and iconic stadiums.

When groups arrive, they will have their own check in with everything pre-prepared to ensure quick and smooth registration.

There are two tours available, a guided tour where you travel around in one group and a self-guided tour with a headset.

The guided tour has fixed times that groups will need to follow, so it's a little restricted for those with busy itineraries.

The self-guided tour is more recommended for groups; you have the freedom to move around and complete the tour as fast or slow as preferred and the headset provided means you're not left without any information – the system also allows you to scan points around the tour for even more insight.

Each stadium tour includes:

- The Liverpool FC Story: Discover 126 years of club history in its interactive museum
- The Steven Gerrard Collection
- Epic pitch and city views from the highest level of the main stand

- The new state-of-the-art home team dressing room and new away team dressing room
- A visit to the press room (with a photo opportunity in the manager's chair)
- The opportunity to touch the 'This Is Anfield' sign
- Walk down the new players tunnel to the sound of the Anfield roar.

Groups can spend anything from one-four hours exploring both sites at Anfield, and with a group menu available, the stadium is the perfect place to enjoy lunch also.

Group rates are available for all pre-booked groups of 15 or more. A coach drop-off point and parking are available, and the driver can receive free entry on the tour as well as free tea or coffee.

HOPPING AROUND

On our visit to Liverpool we used the 'Hop On Hop Off' City Explorer bus.

This allows visitors to see plenty of sites easily, as well as learning facts about the city.

Did you know the iconic Liver Birds on the Liver Building are actually taller than a double-decker bus?

When hopping on the bus, we started at the Royal Albert Dock. There are 13 stops in total along the way doing a full loop of the city.

The first stop we decided to depart at was the Cavern Quarter.

Once here, we walked down Mathew Street, arguably the city's most famous cobbled street, where we were met with gathered crowds outside of The Cavern Club and its sister venue



The Cavern Pub. Further down the street we meet the iconic Cilla Black statue outside of the original opening for The Cavern Club.

Further along we are met with The Beatles' newest attraction. Only three weeks old when we visited, the Magical History Museum – A Fab 4 Experience is a collection mostly belonging to Roag Best, son of Neil Aspinall – the former CEO of Apple Records, and brother to Pete Best – former Beatles drummer.

The Magical History Museum is an immersive audio-visual experience spread across three floors, taking you on a journey from The Beatles' early days to their last.

Visitors will see the instruments The Beatles played, clothes they wore, and some of the earliest known Beatles artifacts on display.

Displays include:

- John Lennon's Sergeant Pepper medals
- Paul McCartney's bass guitar speaker
- Ringo's Ludwig snare drum and stool.

Group rates are available for 10 or more. Visit:

magicalhistorymuseum.com

Once finished, groups can pick the bus back up to rejoin the tour. You will see Liverpool's most famous buildings and sites on this tour, including 30 James Street Hotel – Home of the Titanic. Originally, this building was the *Titanic* operator White Star Line's former HQ.

See the striking Metropolitan Cathedral – Britain's largest catholic cathedral or Liverpool's Anglican Cathedral. At 152m (500ft) above sea level it is the UK's largest cathedral, and the only open air 360° rooftop view of Liverpool and beyond. To book your bus tour visit:

cityexplorerliverpool.co.uk/tour-information

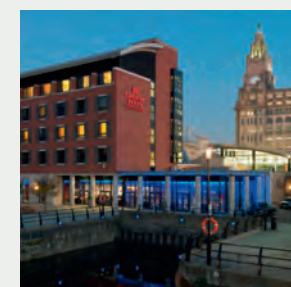
PLACES TO STAY THAT ARE GREAT FOR GROUPS...



IBIS STYLES LIVERPOOL CENTRE DALE STREET

- 123 rooms
- 0151 243 1720

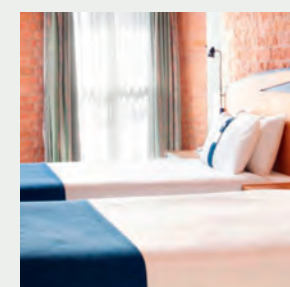
This three-star hotel located in the city centre will continue your Liverpool experience with its clever finishing touches – guests can play 'spot the Beatles lyric' as they explore the 60s-inspired décor.



CROWNE PLAZA LIVERPOOL CITY CENTRE

- 159 rooms
- 0151 253 8000

This central hotel at the Pier Head offers guests amazing views of the River Mersey and Liver Building. The Crowne Plaza also features an on-site brasserie, pool, fitness centre and spa.



HOLIDAY INN EXPRESS ALBERT DOCK

- 130 rooms
- 0844 875 7575

A converted warehouse overlooking Albert Dock, just a stone's throw away from great attractions. Rooms are modern and good-sized. All guests receive an inclusive Express Start Breakfast.

PLACES TO EAT...

GUSTO RESTAURANT AND BAR

gustorestaurants.uk.com

60 HOPE STREET

60hopestreet.com

BACARO

salthousebacaro.co.uk

PANAM RESTAURANT & BAR

panambarliverpool.co.uk

THE SMUGGLERS COVE

thesmugglerscove.uk.com

Lots to do in Liverpool

In need of more itinerary ideas for what to experience here? We present some extra details on what you can find in and around the city

Aparthotel Adagio

The Aparthotel Adagio Liverpool City Centre is a perfect place for your group to stay at the heart of Liverpool.

Located in Liverpool's iconic Lewis's building – formerly the city's leading department store – this property's public areas have historic décor.

The former restaurant now houses the Aparthotel's breakfast room, lounge and meeting space. Profit from its early buffet breakfast starting at 0630hrs, before you enter the city and its iconic attractions like Albert Dock, Liver Building or the many museums – all of them only a short walk from the Aparthotel.

Apartments feature a contemporary design with a fully-equipped kitchen and separate living and sleeping spaces.

You can expect hotel-like services, such as 24hr reception, free wi-fi and housekeeping. Keys are ready on arrival – with full pre-check-in for groups.

There is also a fitness room, mini market, laundry and disabled access and toilets. Free accommodation is offered for drivers on same

meal basis as group. For more information contact: H7332-gm@adagio-city.com

[Visit: adagio-city.com](https://adagio-city.com)

Knowsley Safari

With over 700 amazing animals, Knowsley Safari is a full day of adventure.

And if you're visiting with over 15 people in one vehicle there's even more benefits to make your day fun and hassle free, including:

- Discounted prices
- Free entry and free meal for the group organiser and the driver
- A complimentary familiarisation visit
- Your own private tour guide for just a small extra cost
- Discounted amusement rides wristband
- Free coach parking and a dedicated coach lane at the entrance.

The five-mile safari drive gets you up close to some of the world's most majestic animals

including the two prides of African lions and a crash of Southern White Rhino.

The Foot Safari offers more excitement on foot. The brand-new Amur Tiger Trail brings you so close to tiger territory you'll feel like you could reach out and touch the world's largest cat species, the Amur Tiger.

Visit the Sea Lion Display to witness the biggest splash on safari, or get ready to duck at Flight of the Talons as birds of prey soar overhead. All are welcome on safari with many facilities in place to make this a fantastic and accessible day for all visitors.

[Visit: knowsleysafariexperience.co.uk](https://knowsleysafariexperience.co.uk)

Land Rover Experience Liverpool

Land Rover Experience Liverpool offers an exclusive opportunity to go behind-the-scenes on its live manufacturing tour.

Guests are divided into small groups each led by one of its expert guides who share their

in-depth knowledge of what it takes to bring a Land Rover vehicle to life, from start to finish.

The manufacturing tours begin with an introduction before guests are taken to visit the industrial presses that perfect its vehicles' 3D panels.

Next, visitors witness the family of robots welding, riveting, bonding and measuring the panels to create the finished vehicle body.

The tour finishes with a visit to the paint experts and trim and final specialists who bring everything together to create its iconic vehicles to customers' exact specifications.

To make the trip as smooth as possible Land Rover Experience offers coach parking, a meet and greet service, disabled toilet facilities and a tailored coach driver incentive scheme.

To find out more or to book a group tour, call +44 (0)1514 484023, email liverpool@landroverexperience.com

[Visit: landrover.com/experienceliverpool](https://landrover.com/experienceliverpool)

Magical Mystery Tour – Cavern Club

Step aboard the colourful Magical Mystery Tour bus for a fun and fascinating two-hour tour of Beatles Liverpool.

This tour visits all the places associated with John, Paul, George and Ringo as they grew up, met and formed the band that would take the pop world by storm.



See their childhood homes, schools and colleges and get up close to places that inspired some of their most memorable songs: 'Penny Lane' and 'Strawberry Fields Forever'.

All tickets include entrance into the world-famous Cavern Club where you can enjoy live music daily and experience the evocative spirit of this unique music venue.

Tours depart from Albert Dock daily from 1000hrs.

- Private bespoke tours available upon request
- Multiple language translations
- Large groups are welcome into The Cavern, Monday to Thursday with staggered entry during weekend and peak times.

[Visit: cavernclub.com](https://cavernclub.com)

Mersey Ferries and City Explorer Open Top Bus Tour

'Do the Double' and experience the must-do sights of Liverpool with Mersey Ferries and City Explorer Open Top Bus Tour.

With so much to see and do in Liverpool it can be hard to make the most of the city's unique views and fascinating history.

The 'Do the Double' ticket offers a combined river and city tour including the opportunity to see the UNESCO World Heritage Liverpool Waterfront.

A River Explorer Cruise on board an iconic

Mersey Ferry will take your group on a 50-minute journey with expert commentary throughout the trip.

The cruise includes free entry to U-boat Story at Woodside Ferry Terminal Wirral, where your group can see a German WW2 submarine. Groups will also discover an amazing insight through the submarine's interactive exhibition.

The City Explorer Bus Tour includes live commentary and offers the freedom to explore many of Liverpool's top attractions.

It can also organise a dedicated open top bus, which can meet your group following the River Explorer Cruise at Liverpool, Pier Head Ferry Terminal. Advance booking is required.

This fantastic package will give groups the opportunity to experience the ultimate sightseeing tour during their visit to Liverpool.

[Visit: groups@merseyferries.co.uk](mailto:groups@merseyferries.co.uk) or call 0151 330 1420

National Museums Liverpool

National Museums Liverpool is a group of eight museums and galleries, which attracted more than 3.3 million visitors last year.

With a host of exciting exhibitions and accessible venues, there's plenty for groups to enjoy.

The blockbuster exhibition, *China's First Emperor and the Terracotta Warriors* at World





Museum, gives visitors the chance to experience almost 1,000 years of Chinese history.

Showcasing objects from one of the world's greatest archaeological discoveries, this unmissable exhibition takes in the conflicts and chaos of the Warring States period, to the achievements and legacy of the Qin and Han dynasties.

Group bookings can be made by calling 0151 478 4444.

In a world-first, the Museum of Liverpool is hosting *Double Fantasy - John & Yoko*, a ground-breaking exhibition telling John Lennon and Yoko Ono's story in their own words, exploring the personal and creative chemistry of this iconic couple and their ongoing Imagine Peace campaign.

The 60th anniversary exhibition of the *John Moores Painting Prize* is showing at the Walker Art Gallery until 18 November, while at the Lady Lever Art Gallery, Whistler and Pennell: Etching the City captures the changing landscape of New York and London in the final years of the industrial revolution by James McNeill Whistler and Joseph Pennell.

An exhibition spanning a lifetime of *Charles Rennie Mackintosh (1868-1928)* and his contemporaries, exploring the movement known as the Glasgow Style, opens at the Walker Art Gallery on 15 March 2019. To register your interest for group travel, sign up to the e-newsletter at liverpoolmuseums.org.uk/mackintosh

Pick-up and drop-off points are available outside the Walker Art Gallery and World Museum on William Brown Street, and on a number of waterfront sites close to Museum of Liverpool, Merseyside Maritime Museum and International Slavery Museum.

Visit: liverpoolmuseums.org.uk

Pullman hotel

The UK's first new build Pullman hotel was designed with you in mind.

The Pullman Liverpool is perfectly located in the heart of Liverpool's iconic waterfront within walking distance of the Albert Dock which hosts The Beatles Story, the British Music Experience and the Tate gallery.

Liverpool One shopping district is close by and also leads you to The Cavern, which is a must see for all visitors to Liverpool.

For your convenience, the hotel offers coach pick up/drop off directly outside the hotel and coach parking is available at the nearby Kings Dock.

Its welcome team is on hand to greet you and ensure a seamless check-in experience to one of our 216 beautifully appointed bedrooms.

All of its rooms offer open plan en-suites with walk-in rain showers and luxurious co-below toiletries.

In addition, the rooms feature 55ins televisions with sports channels and movies, bathrobes and slippers are all included as standard.

Its upper floors offer breath-taking views of the city and riverfront, and the hotel has a selection of room types that offer wheelchair accessibility.

To enhance your stay its Wheeler's restaurant by Marco Pierre White provides an unrivalled breakfast in the city and tempts you with mouth-watering dishes throughout the day.

Visit: pullmanhotels.com

The Beatles Story

The award-winning 'The Beatles Story' is the world's largest permanent exhibition devoted to telling the story of The Beatles' rise to fame.

Located in the Fab Four's hometown of Liverpool on the stunning UNESCO World heritage waterfront at the Albert Dock, The Beatles Story takes visitors on an immersive journey through the lives, times, culture and music of the world's greatest band.

The Beatles Story offers special rates for travel trade partners and group visits. Whether your group visit is for tourism or educational purposes, The Beatles Story guarantees a unique, unforgettable experience for all.

Multi-media guides are included and are available in 12 different languages; narrated with subtitles by John Lennon's sister, Julia Baird.

Other group features include a drop-off point and coach welcome scheme at the Albert Dock, nearby coach parking, free entry for group leaders and drivers, and accessible toilet facilities.

Groups can spend anything between one to four hours exploring The Beatles Story, and will also find a Beatles-themed Fab4 Cafe on site, as well as a Fab4 Store full of The Beatles and Liverpool souvenirs and gifts.

Visit: beatlesstory.com



adagio
APARTHOTEL

Feel at home, with hotel services

Aparthotel Adagio Liverpool City Centre
YOUR HOME FROM HOME AT THE HEART OF THE CITY

- + Keys ready on arrival
- + Buffet Breakfast from 6.30 am
- + Coach parking nearby - Drivers stay for free
- + Free Wifi
- + h7332-gm@adagio-city.com

Stay, Live, Enjoy

adagio-city.com

Suiteshotel
SPA & LEISURE

'SUITE' DREAMS

Suites Hotel Spa & Leisure is the only 4 star hotel in the North West of England where every room is a suite. All of our 96 suites offer a spacious lounge, large en-suite bedroom and a business area with state-of-the-art communications. Relax in our award winning spa, workout in our gym and heated pool and sample the culinary delights of Handley's Brasserie. Our meeting rooms can accommodate from 2-300 delegates in unique surroundings, providing a professional & comfortable environment with a high level of customer service. We also have ample FREE parking.

Visit www.suiteshotelgroup.com or call 0151 549 2222
Ribblers Lane, Knowsley, Prescot, Merseyside L34 9HA. Junction 4, M57.

[TheSuitesHotel](https://www.facebook.com/TheSuitesHotel) [@SuitesHotel](https://twitter.com/SuitesHotel) [@SuitesHotel](https://www.instagram.com/SuitesHotel)

THE BEATLES STORY
LIVERPOOL

Celebrating 50 years of
beatles in india

NEW FOR 2018

#BeatlesInIndia beatlesstory.com

[f](https://www.facebook.com/beatlesstory) [t](https://twitter.com/beatlesstory) [i](https://www.instagram.com/beatlesstory)

L.F.C.

THIS IS
EPIC

THIS IS
ANFIELD

UNMISSABLE. IMMERSIVE.
THE NEW LFC STADIUM TOUR

liverpoolfc.com/tours

Available in 9 languages

[UK](#) [France](#) [Germany](#) [Spain](#) [Italy](#) [China](#) [Japan](#) [USA](#) [Russia](#)

What's on in Liverpool



Here's a taste of **what groups can look forward to** when visiting Liverpool.
Perfect for planning your next coach tour

International Horse Show: 28-31 December 2018

The International Horse Show is back for a third year at the Echo Arena. With top class show jumping and family entertainment.

Dressage will be returning for the second time after receiving fantastic reviews from riders and spectators last year. Up to 10 top riders will be performing in an Invitational Inter 1 Freestyle to music.

Da Vinci exhibition: 1 February – 6 May 2019

In February 2019, the Walker Art Gallery will mark the 500th anniversary of the death of Leonardo da Vinci.

On display will be 144 of the Renaissance master's greatest drawings in the Royal Collection in 12 simultaneous exhibitions across the UK.

Charles Rennie Mackintosh exhibition: 15 March – 26 August 2019

Also on display at the Walker Art Gallery will be Charles Rennie Mackintosh's exhibition.

This will span the lifetime of Mackintosh (1868–1928) and his contemporaries, exploring the movement that became known as The Glasgow Style.

About 250 objects will be on display.

Keith Haring exhibition: 14 June – 10 November 2019

Visit Tate Liverpool for the first major UK exhibition of artist and activist Keith Haring.

Visitors will be able to enjoy more than 70 art works including large, vibrant paintings, drawings and sculptures.

Posters, photographs, and videos will also be on display.

Netball World Cup: 12-21 July 2019

Netball World Cup 2019 is the 15th edition of the premier international netball tournament and will take place at ACC Liverpool. This is the third time the quadrennial event has been held in England.

Strawberry Fields Development

The Salvation Army plans to redevelop the iconic Strawberry Field site, which closed in 2005. The charity says: "The site is due to see its famous gates open to the public for the first time, weaving together educational, cultural, heritage and spiritual exploration in one bold, imaginative plan." Below are the original gates on display in The Beatles Story.

For more information, visit:
visitoliverpool.com/whats-on



EXPLORE at **CHESTER ZOO**

Chester Zoo is home to over 21,000 endangered and exotic animals based in **BEAUTIFUL**, award-winning gardens. You're sure to have an **ADVENTURE!**

Book a group of 15 or more online and save up to 30% at www.chesterzoo.org/groups

For more info call us direct on 0870 720 1507 or email groups@chesterzoo.org

Great things have been arriving here for centuries. Be the next.

Museums, events, restaurants, cafés, shops & the Tate gallery, set at the heart of this Grade I listed heritage site.

What's on the **Dock**

Royal Albert Dock Liverpool

VISION

Vision Coaches, 365 Hale Road, Halebank, Widnes WA8 8TR
bookings@visioncoaches.co.uk
accounts@visioncoaches.co.uk
Call +44 (0) 151 4241030 after hours +44 (0) 7592018344

Coaches for incoming visitors to Liverpool - small groups through to conference groups of 500/800 people

- Executive coaches from 19 seats through to 57 seats
- Coaches to sports events
- Football fans to away games
- School trips
- Coaches for tour operators
- UK and European tours
- Weekend trips
- Coach transfers from any UK airport to Liverpool hotels/conference centre

Virgin trains

HIRE YOUR OWN PRIVATE TRAIN CARRIAGE

LIKE A LIMO, BUT WITH HEADROOM. AND LOOS.

Swap bored meetings for onboard meetings, hold events, away days or a public transport quiz on the way to your Liverpool conference. There are plug points at every seat in First Class, amazing food available and WiFi wherever you go, you'll even have your very own host to see that you have everything you need.

As well as our ongoing discount of up to 20% for groups of 10+ passengers, you can now, for the first time ever, hire Standard exclusive carriages. Make your event unforgettable.

GIVE THE VIP CONCIERGE TEAM A BUZZ ON 0333 103 8545 OR EMAIL RED.CARPET@VIRGINTRAINS.CO.UK

VISIT LIVERPOOL

LIVERPOOL FOR GROUPS IN 2019

Liverpool's reputation as a leading destination for groups just keeps on growing.

Our key themes of Music, Sport and Culture offer group travel organisers a huge variety of attractions and venues to choose from.

Located within the heart of the northwest Liverpool is the ideal base to explore the city and region.

We look forward to welcoming you soon.



To request a copy of the latest Travel Trade Guide simply email us at traveltrade@marketingliverpool.co.uk or download from VisitLiverpool.com/traveltrade

It's packed with ideas and inspiration plus details on coach parking, coach welcome schemes and sample itineraries.

#LIVERPOOL2018